

# Census Report 2010

Program Anestisiologi

Kementerian Kesihatan Malaysia

## List of Tables

No.	Title
1	Anaesthetics administered according to techniques in KKM hospitals, 2010
2	Anaesthetics and nature of surgery in KKM hospitals, 2010
3	Anaesthetics for day care surgery and day of surgery admissions in KKM hospitals, 2010
4	Anaesthetic for LSCS and nature of surgery in KKM hospitals, 2010
5	Anaesthetics for LSCS and techniques of anaesthesia in KKM hospitals, 2010
6	Acute pain service and techniques of pain control in KKM hospitals, 2010
7	Epidural analgesia for labour in KKM hospitals, 2010
8	No. of attendances at anaesthetic clinic in KKM hospitals, 2010
9	Admissions, patient days and bed-occupancy rates in ICU KKM hospitals, 2010
10	Admissions, patient days and bed-occupancy rates in HDU / PACU in KKM hospitals, 2010
11	Attendances, new cases and procedures at Chronic Pain Clinics in KKM hospitals, 2010
12	No. of anaesthetics administered in KKM hospitals, 2006-2010
13	No. of anaesthetics administered for emergency surgery in KKM hospitals, 2006 - 2010
14	Saturdays Lists in KKM Hospitals, 2010
15	Trends in output for Program Anestisiologi KKM, 2004-2010
16	Anaesthetic specialists in KKM hospitals, 2010
17	Anaesthetic medical officers and trainees in KKM hospitals, 2010
18	Anaesthetic /ICU nurses and assisted medical officers in KKM hospitals, 2010
19	Subspecialists under Program Anestisiologi in KKM hospitals, 2010
20	No. of ICU / HDU beds and OT in KKM hospitals 2010
21	Program Anestisiologi key performance indicators, 2010

## **PROGRAM ANESTISIOLOGI: CENSUS REPORT 2010**

Prepared by:  
*Dr. Ng Siew Hian*  
National Advisor  
Program Anestisiologi  
Ministry of Health  
April 2010

Program Anestisiologi is responsible for the provision of three major services: (1) anaesthetic service in the operating theatre and in non-OT locations (2) care of the critically ill in the intensive care units and (3) pain management. This report is a compilation of census on workload, manpower, facilities and key performance indicators.

### **SUMMARY**

1. A total of 79 hospitals provided anaesthetic service in Ministry of Health; 47 with resident anaesthetists. (Table 1)
2. The total no. of anaesthetics administered was 319150, an increase of 3.5% over the previous year. Of this number, 58.1% were for emergency surgery. (Table 2)
3. Hospitals with the most number of anaesthetics were: HKL (25732), H Ipoh (15356) and HSAJB (14658) (Table 2)
4. General anaesthesia was the most common technique (57.6%) followed by spinal anaesthesia (35.4%), epidural (0.7%), combined spinal and epidural (1.5%) and plexus block (0.8%) (Table 1)
5. The percentage of anaesthetics for emergency surgery continued to rise from 55.8% in 2009 to 58.1% in 2010; only in five hospitals with specialists there were more elective surgery than emergency surgery i.e. HKL, H Putrajaya, HPP, H Selayang and H Sibul. This is a worrying trend as it reflects the relative shortage of OT time for elective surgery (Table 2 and 13)
6. There were 5543 anaesthetics administered for day care surgery; 4.1% of anaesthetics for elective surgery. A total of 2648 anaesthetics were administered as day of surgery admissions, an increase of 1.1% from previous year. (Table 3)
7. Seventy-nine percent of all anaesthetics administered for LSCS were done as emergencies (Table 4) with the vast majority of them performed under spinal anaesthesia (83.3%); 14% of LSCS were done under general anaesthesia (Table 5)
8. A total of 70651 patients received post-operative pain management under the acute pain service; an increase of 15% over the previous year. 42% of patients had intra-thecal morphine, 25% patient controlled analgesia and 17% epidural analgesia. (Table 6)

9. A total of 4061 parturients received epidural analgesia during labour; an increase of 2.7% from the previous year. Hospitals with significant obstetric analgesia service were HKL, H Ipoh, H Melaka and H Likas (Table 7)
10. The no. of patients who were seen at the anaesthetic clinics for preoperative assessment increased by 9% to 52880 with HSAJB, H Melaka and HKL having the most numbers (Table 8)
11. There were 46 general ICUs under Program Anestisiologi with a total admission of 30115, an increase of 21% from previous year. Hospitals with the highest admissions were: HKL, H Melaka, HSAJB, H Sg Buloh and HTAR Klang (Table 9)
12. Across the board, high bed occupancy rates (BOR) were recorded in ICU reflecting a severe shortage of ICU beds in MOH hospitals. Twelve ICUs had BOR of >100%. The recommended BOR for ICU is 75% (Table 9)
13. The total no. of patients admitted to the high dependency units were 7474, an increase of 6.8% over the previous year. Hospitals with high HDU workload (patient days) were H Ipoh, H Kuantan and H Alor Setar (Table 10)
14. There were 9 chronic pain clinics with a total of 6281 patient attendances, an increase of 36% from the previous year. The number of new cases seen were 895, an increase of 41%; similarly the no. of procedure done increased from 366 to 590 (61% increase). H Ipoh, H Selangor and HTAR Klang had the highest no. of attendances. (Table 11)
15. A total of 10875 patients were operated under the Saturday List programme in 31 hospitals, of whom 7528 were done under general anaesthesia. This represented an increase of 56% from previous year. (Table 14)
16. All the output indicators continued to show upward trends in the last six years; when compared with 2009, the following increases were noted: no. of anaesthetics administered (3.6%), no. of anaesthetics for day care surgery (4.1%), no. of patients under acute pain service (6.1%), no. of patients under obstetric analgesia service (10.6%), no. of attendance at anaesthetic clinic (9.1%), no. of ICU admission (20.9%), no. of HDU admission (6.8%) and no. of attendance at chronic pain clinic (35.9%) (Table 15)
17. As of 31st December 2010, there were 275 anaesthetists, 502 medical officers and 129 trainees in the Ministry of Health hospitals (Table 16, 17)
18. There were 337 assistant medical officers, 706 anaesthetic nurses and 2365 ICU nurses and 104 nurses in pain service and anaesthetic clinic giving a total nursing and allied health workforce of 3512 (Table 18)
19. As of December 2010, there were 49 subspecialists (17.8% of total workforce) and 41 specialist trainees under Program Anestisiologi. There were 14 cardiac anaesthetists, 10 pediatric anaesthetists, 4 neuroanaesthetists, 3 obstetric anaesthetists, 13 intensivists and 4 pain specialists (Table 19)

20. There were 526 ICU beds of which 486 were functional (92%); this was an increase of 62 functional beds from the previous year. There were 130 functional HDU beds from a total of 212 (61%). (Table 20)
21. There were 364 functional operating theatres, an increase of 11 over the previous year. (Table 20)
22. Thirty-four hospitals submitted their mean KPI results. Most of the KPIs were within the national standards, however, H Serdang, HSAJB, H Umum Sarawak and H Selayang were outliers for waiting time for emergency surgery (Table 21)

## **CONCLUSION**

Program Anestisiologi continued to expand in 2010 both in terms of scope and volume of work; the increase in manpower is reflected in increase in productivity. Generally, key performance indicators were met. However, two major challenges remain: (1) shortage of operating time for elective surgery and (2) shortage of intensive care beds. Concerted efforts must be taken to address these two issues.

Table 1 : Anaesthetics administered according to techniques in KKM hospitals, 2010

No.	HOSPITAL	General Anaesthesia	Spinal Anaesthesia	Epidural Anaesthesia	Combined Spinal & Epidural (CSE)	Combined General & Regional Anaesthesia (CGRA)	Plexus Blockade	Others	TOTAL
	<b>PERLIS</b>								
1	Kangar	2452	1485	8	227	33	54	0	4259
	<b>KEDAH</b>								
2	Alor Setar	7941	5088	33	114	288	134	107	13705
3	Langkawi	470	451	2	17	20	18	7	985
4	Sultan Abdul Halim, Sungai Petani	4120	3910	3	148	80	71	18	8350
5	Kulim	1995	1383	71	88	136	81	141	3895
	<b>PULAU PINANG</b>								
6	Pulau Pinang	8582	3504	60	18	204	13	177	12558
7	Seberang Jaya	2731	3057	99	36	21	60	338	6342
8	Bukit Mertajam	504	370	1	19	29	2	0	925
9	Kepala Batas	158	83	1	3	5	0	0	250
	<b>PERAK</b>								
10	Ipoh	9975	4529	217	232	272	57	74	15356
11	Seri Manjung	1709	1726	4	33	97	117	6	3692
12	Teluk Intan	2237	2445	41	265	164	2	17	5171
13	Taiping	4914	3456	239	125	18	22	16	8790
14	Slim River	309	289	0	0	2	0	0	600
	<b>SELANGOR</b>								
15	Tuanku Ampuan Rahimah, Kelang	6109	4329	83	249	59	11	2	10842
16	Ampang	3725	1804	52	83	83	52	0	5799
17	Serdang	4832	2698	15	133	84	97	31	7890
18	Selayang	5216	3636	76	357	356	52	193	9886
19	Sungai Buloh	4041	3111	11	17	16	44	0	7240
20	Kajang	1646	1908	5	71	49	140	63	3882
	<b>WILAYAH PERSEKUTUAN</b>								
21	Kuala Lumpur	18444	5994	311	93	562	173	155	25732
22	Putrajaya	3218	2032	55	198	4	0	39	5546
23	Labuan	293	242	0	0	5	0	2	542
	<b>NEGERI SEMBILAN</b>								
24	Tuanku Jaafar, Seremban	4519	3511	33	427	553	78	20	9141
25	Tuanku Ampuan Najihah, Kuala Pilah	1003	1093	6	85	41	24	1	2253
	<b>MELAKA</b>								
26	Melaka	7972	3979	201	33	151	58	33	12427
	<b>JOHOR</b>								
27	Sultanah Aminah, JB	9712	4564	74	202	76	10	20	14658
28	Sultan Ismail, JB	3709	2646	9	141	92	1	77	6675
29	Muar	2310	2146	1	49	32	31	0	4569
30	Batu Pahat	2093	2069	0	92	91	105	15	4465
31	Segamat	914	976	6	22	1	70	40	2029
32	Kluang	276	658	3	2	20	11	4	974
33	Kulai	337	274	0	15	17	0	0	643
	<b>PAHANG</b>								
34	Tengku Ampuan Afzan, Kuantan	5504	3254	21	163	93	47	19	9101
35	Temerloh	2545	2831	4	36	47	0	607	6070
	<b>TERENGGANU</b>								
36	Sultanah Nur Zahirah, Kuala Terengganu	6142	3834	53	161	398	285	6	10879
37	Kemaman	528	645	0	5	8	2	9	1197
	<b>KELANTAN</b>								
38	Raja Perempuan Zainab II, Kota Bharu	5402	3589	27	234	417	44	244	9957
39	Kuala Krai	770	949	4	10	12	1	0	1746
40	Tanah Merah	615	616	6	25	30	0	4	1296

No.	HOSPITAL	General Anaesthesia	Spinal Anaesthesia	Epidural Anaesthesia	Combined Spinal & Epidural (CSE)	Combined General & Regional Anaesthesia (CGRA)	Plexus Blockade	Others	TOTAL
	<b>SARAWAK</b>								
41	Umum Sarawak	7155	3644	29	197	143	45	138	11351
42	Sibu	3657	1990	13	78	54	196	99	6087
43	Miri	2059	1821	4	144	146	33	53	4260
44	Bintulu	1320	980	1	21	2	29	4	2357
45	Sarikei	307	146	0	0	0	45	96	594
46	Kapit	140	114	0	0	0	0	174	428
47	Serian	163	291	0	0	0	0	125	579
48	Bau	117	8	0	0	0	0	0	125
49	Lundu	38	28	0	0	0	0	23	89
50	Simunjan	7	2	0	0	0	0	0	9
51	Sri Aman	103	42	0	0	0	0	0	145
52	Betong	39	168	0	0	0	0	101	308
53	Saratok	13		0	0	0	0	13	26
54	Mukah	105	55	0	0	0	0	27	187
55	Daro	21	15	0	0	0	0	3	39
56	Kanowit	30	29	0	0	0	0	4	63
57	Lawas	75	19	0	0	1	0	6	101
58	Limbang	158	92	0	0	0	0	178	428
59	Marudi	40	49	0	0	0	0	68	157
	<b>SABAH</b>								
60	Queen Elizabeth	4161	1235	18	78	64	40	105	5701
61	Duchess Of Kent	2264	1559	34	9	20	44	59	3989
62	Likas	5249	2032	126	2	336	0	19	7764
63	Keningau	1602	496	2	0	35	0	497	2632
64	Tawau	2172	1832	30	3	30	17	266	4350
65	Kudat	251	17	0	0	1	0	158	427
66	Kota Marudu	176	4	0	0	0	0	144	324
67	Kota Belud	47	0	0	0	0	0	320	367
68	Mesra, Bukit Padang	437	0	0	0	0	0	0	437
69	Papar	0	0	0	0	0	0	143	143
70	Beaufort	232	99	0	0	0	0	64	395
71	Sipitang	21	0	0	0	0	0	43	64
72	Tenom	7	60	0	0	0	0	441	508
73	Tambunan	55	2	0	0	0	0	226	283
74	Ranau	180	30	0	0	0	0	1218	1428
75	Beluran	34	66	0	0	0	0	114	214
76	Pitas	30	0	0	0	0	0	5	35
77	Lahad datu	758	601	4	0	25	2	20	1410
78	Kunak	7	15	0	0	0	0	2	24
79	Semporna	25	0	0	0	0	0	40	65
	<b>TOTAL</b>	183227	112705	2096	4760	5523	2418	7481	318210
		57.6%	35.4%	0.7%	1.5%	1.7%	0.8%	2.4%	

Table 2 : Anaesthetics and nature of surgery in KKM hospitals, 2010

No.	HOSPITAL	Elective Surgery	Emergency Surgery		TOTAL
				(%)	
	<b>PERLIS</b>				
1	Kangar	1835	2424	56.9%	4259
	<b>KEDAH</b>				
2	Alor Setar	6632	7073	51.6%	13705
3	Langkawi	297	688	69.8%	985
4	Sultan Abdul Halim,Sungai Petani	2599	5751	68.9%	8350
5	Kulim	1723	2172	55.8%	3895
	<b>PULAU PINANG</b>				
6	Pulau Pinang	6412	6146	48.9%	12558
7	Seberang Jaya	1797	4545	71.7%	6342
8	Bukit Mertajam	2296	47	2.0%	2343
9	Kepala Batas	250	0	0.0%	250
	<b>PERAK</b>				
10	Ipoh	6200	9156	59.6%	15356
11	Seri Manjung	1229	2463	66.7%	3692
12	Teluk Intan	1647	3528	68.2%	5175
13	Taiping	3109	5681	64.6%	8790
14	Slim River	255	345	57.5%	600
	<b>SELANGOR</b>				
15	Tuanku Ampuan Rahimah, Kelang	4885	5957	54.9%	10842
16	Ampang	2463	3336	57.5%	5799
17	Serdang	3492	4398	55.7%	7890
18	Selayang	5036	4850	49.1%	9886
19	Sungai Buloh	1759	5481	75.7%	7240
20	Kajang	1129	2895	71.9%	4024
	<b>WILAYAH PERSEKUTUAN</b>				
21	Kuala Lumpur	14541	11191	43.5%	25732
22	Putrajaya	2973	2573	46.4%	5546
23	Labuan	265	277	51.1%	542
	<b>NEGERI SEMBILAN</b>				
24	Tuanku Jaafar, Seremban	3718	5423	59.3%	9141
25	Tuanku Ampuan Najihah, Kuala Pilah	958	1295	57.5%	2253
	<b>MELAKA</b>				
26	Melaka	4986	7441	59.9%	12427
	<b>JOHOR</b>				
27	Sultanah Aminah, JB	4846	9812	66.9%	14658
28	Sultan Ismail, JB	2150	4525	67.8%	6675
29	Muar	1950	2619	57.3%	4569
30	Batu Pahat	1483	2982	66.8%	4465
31	Segamat	827	1545	65.1%	2372
32	Kluang	384	590	60.6%	974
33	Kulai	643	0	0.0%	643
	<b>PAHANG</b>				
34	Tengku Ampuan Afzan, Kuantan	4244	4857	53.4%	9101
35	Temerloh	1931	4139	68.2%	6070
	<b>TERENGGANU</b>				
36	Sultanah Nur Zahirah, Kuala Terengganu	3841	7038	64.7%	10879
37	Kemaman	340	857	71.6%	1197
	<b>KELANTAN</b>				
38	Raja Perempuan Zainab II, Kota Bharu	3461	5529	61.5%	8990
39	Kuala Krai	545	1201	68.8%	1746
40	Tanah Merah	380	916	70.7%	1296



No.	HOSPITAL	Elective Surgery	Emergency Surgery		TOTAL
	<b>SARAWAK</b>			(%)	
41	Umum Sarawak	4627	6724	59.2%	11351
42	Sibu	3204	2883	47.4%	6087
43	Miri	1258	3002	70.5%	4260
44	Bintulu	929	1428	60.6%	2357
45	Sarikei	199	395	66.5%	594
46	Kapit	283	145	33.9%	428
47	Serian	297	282	48.7%	579
48	Bau	21	104	83.2%	125
49	Lundu	31	58	65.2%	89
50	Simunjan	7	2	22.2%	9
51	Sri Aman	92	53	36.6%	145
52	Betong	197	111	36.0%	308
53	Saratok	16	10	38.5%	26
54	Mukah	105	82	43.9%	187
55	Daro	21	18	46.2%	39
56	Kanowit	43	20	31.7%	63
57	Lawas	55	46	45.5%	101
58	Limbang	293	135	31.5%	428
59	Marudi	89	68	43.3%	157
	<b>SABAH</b>				
60	Queen Elizabeth	2525	3176	55.7%	5701
61	Duchess Of Kent	1416	2573	64.5%	3989
62	Likas	2868	4896	63.1%	7764
63	Keningau	1215	1417	53.8%	2632
64	Tawau	1516	2834	65.1%	4350
65	Kudat	264	163	38.2%	427
66	Kota Marudu	155	169	52.2%	324
67	Kota Belud	195	172	46.9%	367
68	Mesra, Bukit Padang	437	0	0.0%	437
69	Papar	143	0	0.0%	143
70	Beaufort	255	140	35.4%	395
71	Sipitang	27	37	57.8%	64
72	Tenom	455	53	10.4%	508
73	Tambunan	54	229	80.9%	283
74	Ranau	580	848	59.4%	1428
75	Beluran	133	81	37.9%	214
76	Pitas	12	23	65.7%	35
77	Lahad datu	268	1142	81.0%	1410
78	Kunak	24	0	0.0%	24
79	Semporna	15	50	76.9%	65
	<b>TOTAL</b>	133835	185315	58.1%	319150

Table 3 : Anaesthetics for Day Care Surgery and Day of Surgery Admissions in KKM hospitals, 2010

No.	HOSPITAL	Day Care Surgery		Day Of Surgery Admissions	
		2009	2010	2009	2010
	<b>PERLIS</b>				
1	Kangar	29	19	0	0
	<b>KEDAH</b>				
2	Alor Setar	579	625	0	0
	<b>PULAU PINANG</b>				
3	Pulau Pinang	294	206	293	372
4	Seberang Jaya	0	184	0	53
	<b>PERAK</b>				
5	Ipoh	979	1101	597	336
6	Seri Manjung	201	161	0	0
7	Slim River	311	122	311	0
	<b>SELANGOR</b>				
8	Tuanku Ampuan Rahimah, Kelang	309	471	323	524
9	Ampang	85	205	0	0
10	Serdang	520	505	0	0
11	Sungai Buloh	24	11	549	774
	<b>WILAYAH PERSEKUTUAN</b>				
12	Kuala Lumpur	486	462	228	431
13	Putrajaya	1080	573	0	0
	<b>PAHANG</b>				
14	Tengku Ampuan Afzan, Kuantan	151	157	0	0
	<b>TERENGGANU</b>				
15	Sultanah Nur Zahirah, Kuala Terengganu	498	231	11	5
	<b>SABAH</b>				
16	Lahad datu	7	0	31	31
17	Tawau	176	0	48	113
18	Likas	188	240	0	9
19	Ranau	0	287	0	0
20	Beaufort	6	5	0	0
	<b>TOTAL</b>	<b>5923</b>	<b>5565</b>	<b>2391</b>	<b>2648</b>

Table 4 : Anaesthetic for LSCS and nature of surgery in KKM hospitals, 2010

No.	HOSPITAL	Elective LSCS	Emergency LSCS	(%)	TOTAL
	<b>PERLIS</b>				
1	Kangar	250	638	71.8%	888
	<b>KEDAH</b>				
2	Alor Setar	911	2344	72.0%	3255
3	Langkawi	69	146	67.9%	215
4	Sultan Abdul Halim,Sungai Petani	306	1898	86.1%	2204
5	Kulim	295	573	66.0%	868
	<b>PULAU PINANG</b>				
6	Pulau Pinang	356	1124	75.9%	1480
7	Seberang Jaya	495	1389	73.7%	1884
	<b>PERAK</b>				
8	Ipoh	748	2009	72.9%	2757
9	Seri Manjung	160	737	82.2%	897
10	Teluk Intan	83	1241	93.7%	1324
11	Taiping	406	1707	80.8%	2113
12	Slim River	71	190	72.8%	261
	<b>SELANGOR</b>				
13	Tuanku Ampuan Rahimah, Kelang	679	2122	75.8%	2801
14	Ampang	399	1177	74.7%	1576
15	Serdang	397	1279	76.3%	1676
16	Selayang	438	1824	80.6%	2262
17	Sungai Buloh	385	1868	82.9%	2253
18	Kajang	215	776	78.3%	991
	<b>WILAYAH PERSEKUTUAN</b>				
19	Kuala Lumpur	802	2732	77.3%	3534
20	Putrajaya	405	1145	73.9%	1550
21	Labuan	31	187	85.8%	218
	<b>NEGERI SEMBILAN</b>				
22	Tuanku Jaafar, Seremban	324	1822	84.9%	2146
23	Tuanku Ampuan Najihah, Kuala Pilah	155	465	75.0%	620
	<b>MELAKA</b>				
24	Melaka	570	1582	73.5%	2152
	<b>JOHOR</b>				
25	Sultanah Aminah, JB	654	2960	81.9%	3614
26	Sultan Ismail, JB	331	1243	79.0%	1574
27	Muar	216	796	78.7%	1012
28	Batu Pahat	272	703	72.1%	975
29	Segamat	53	382	87.8%	435
30	Kluang	117	379	76.4%	496
	<b>PAHANG</b>				
31	Tengku Ampuan Afzan, Kuantan	600	1522	71.7%	2122
32	Temerloh	287	1597	84.8%	1884
	<b>TERENGGANU</b>				
33	Sultanah Nur Zahirah, Kuala Terengganu	498	1656	76.9%	2154
34	Kemaman	67	263	79.7%	330
	<b>KELANTAN</b>				
35	Raja Perempuan Zainab II, Kota Bharu	455	1894	80.6%	2349
36	Kuala Krai	112	303	73.0%	415
37	Tanah Merah	63	322	83.6%	385

No.	HOSPITAL	Elective LSCS	Emergency LSCS		TOTAL
	<b>SARAWAK</b>			(%)	
38	Umum Sarawak	275	2282	89.2%	2557
39	Sibu	205	726	78.0%	931
40	Miri	117	931	88.8%	1048
41	Bintulu	72	480	87.0%	552
42	Sarikei	0	47	100.0%	47
43	Kapit	2	35	94.6%	37
44	Serian	22	141	86.5%	163
45	Bau	5	32	86.5%	37
46	Lundu	1	12	92.3%	13
47	Simunjan	0	0	0.0%	0
48	Sri Aman	10	21	67.7%	31
49	Betong	18	43	70.5%	61
50	Saratok	0	3	100.0%	3
51	Mukah	0	40	100.0%	40
52	Daro	1	9	90.0%	10
53	Kanowit	0	2	100.0%	2
54	Lawas	2	30	93.8%	32
55	Limbang	0	52	100.0%	52
56	Marudi	2	8	80.0%	10
	<b>SABAH</b>				
57	Duchess Of Kent	214	894	80.7%	1108
58	Likas	573	2540	81.6%	3113
59	Keningau	94	369	79.7%	463
60	Tawau	239	1133	82.6%	1372
61	Kudat	20	76	79.2%	96
62	Kota Marudu	14	87	86.1%	101
63	Beaufort	30	67	69.1%	97
64	Sipitang	0	13	100.0%	13
65	Tenom	2	37	94.9%	39
66	Ranau	11	98	89.9%	109
67	Lahad Datu	67	597	89.9%	664
68	Pitas	0	19	100.0%	19
	<b>TOTAL</b>	14671	55819	79.2%	70490

Table 5 : Anaesthetics for LSCS and techniques of anaesthesia in KKM hospitals, 2010

No.	HOSPITAL	General Anaesthesia	Spinal Anaesthesia	Epidural Anaesthesia	CSE	Others *	TOTAL
	<b>PERLIS</b>						
1	Kangar	117	771	0	0	0	888
	<b>KEDAH</b>						
2	Alor Setar	1621	1614	4	16	0	3255
3	Langkawi	10	196	2	9	1	218
4	Sultan Abdul Halim,Sungai Petani	306	1898	1	1	0	2206
5	Kulim	265	597	0	6	0	868
	<b>PULAU PINANG</b>						
6	Pulau Pinang	282	1136	34	8	20	1480
7	Seberang Jaya	104	1765	6	3	6	1884
	<b>PERAK</b>						
8	Ipoh	251	2236	194	4	72	2757
9	Seri Manjung	39	856	2	0	0	897
10	Teluk Intan	48	1215	2	18	41	1324
11	Taiping	158	1894	13	38	0	2103
12	Slim River	50	211	0	0	0	261
	<b>SELANGOR</b>						
13	Tuanku Ampuan Rahimah, Kelang	122	2591	70	18	0	2801
14	Ampang	120	1431	16	9	0	1576
15	Serdang	122	1499	6	6	43	1676
16	Selayang	133	1953	98	77	1	2262
17	Sungai Buloh	158	2080	4	3	8	2253
18	Kajang	48	939	1	3	0	991
	<b>WILAYAH PERSEKUTUAN</b>						
19	Kuala Lumpur	172	3017	256	31	58	3534
20	Putrajaya	134	1312	41	63	0	1550
21	Labuan	29	189	0	0	0	218
	<b>NEGERI SEMBILAN</b>						
22	Tuanku Jaafar, Seremban	648	1395	10	52	41	2146
23	Tuanku Ampuan Najihah, Kuala Pilah	41	579	0	0	0	620
	<b>MELAKA</b>						
24	Melaka	387	1706	26	33	0	2152
	<b>JOHOR</b>						
25	Sultanah Aminah, JB	350	3204	52	8	0	3614
26	Sultan Ismail, JB	195	1608	0	1	3	1807
27	Muar	57	955	0	0	0	1012
28	Batu Pahat	81	894	0	0	0	975
29	Segamat	16	421	0	0	0	437
30	Kluang	28	455	0	2	12	497
	<b>PAHANG</b>						
31	Tengku Ampuan Afzan, Kuantan	324	1786	11	1	0	2122
32	Temerloh	133	1719	0	8	24	1884
	<b>TERENGGANU</b>						
33	Sultanah Nur Zahirah, Kuala Terengganu	155	1877	25	6	91	2154
34	Kemaman	46	284	0	0	0	330
	<b>KELANTAN</b>						
35	Raja Perempuan Zainab II, Kota Bharu	250	2085	0	10	0	2345
36	Kuala Krai	25	390	0	0	0	415
37	Tanah Merah	29	355	0	0	0	384

No.	HOSPITAL	General Anaesthesia	Spinal Anaesthesia	Epidural Anaesthesia	CSE	Others *	TOTAL
	<b>SARAWAK</b>						
38	Umum Sarawak	339	2198	6	7	7	2557
39	Sibu	166	764	0	0	1	931
40	Miri	70	977	0	1	0	1048
41	Bintulu	49	502	0	0	0	551
42	Sarikei	2	45	0	0	0	47
43	Kapit	7	28	0	0	0	35
44	Serian	8	155	0	0	0	163
45	Bau	32	5	0	0	0	37
46	Lundu	1	12	0	0	0	13
47	Simunjan	0		0	0	0	0
48	Sri Aman	14	17	0	0	0	31
49	Betong	7	54	0	0	0	61
50	Saratok	0	3	0	0	0	3
51	Mukah	9	31	0	0	0	40
52	Daro	1	9	0	0	0	10
53	Kanowit	2	0	0	0	0	2
54	Lawas	32	0	0	0	0	32
55	Limbang	0	52	0	0	0	52
56	Marudi	2	8	0	0	0	10
	<b>SABAH</b>						
57	Duchess Of Kent	141	945	1	0	21	1108
58	Likas	1157	1895	59	2	0	3113
59	Keningau	205	242	1	0	15	463
60	Tawau	117	1254	1	0	0	1372
61	Kudat	96	0	0	0	0	96
62	Kota Marudu	97	4	0	0	0	101
65	Beaufort	67	30	0	0	0	97
66	Sipitang	13	0	0	0	0	13
67	Tenom	5	34	0	0	0	39
69	Ranau	91	18	0	0	0	109
70	Lahad Datu	122	525	1	0	16	664
71	Pitas	19	0	0	0	0	19
<b>TOTAL</b>		9925	58920	943	444	481	<b>70713</b>
		14.0%	83.3%	1.3%	0.6%	0.7%	

Table 6 : Acute pain service and techniques of pain control in KKM hospitals, 2010

No.	HOSPITAL	Patient Controlled Analgesia (IV)	Epidural Analgesia	Intra-thecal Opioid	Nerve / Plexus Infusion	S/C Morphine	Others	TOTAL
	<b>PERLIS</b>							
1	Kangar	77	105	0	0	0	0	182
	<b>KEDAH</b>							
2	Alor Setar	829	726	504	4	0	35	2098
3	Langkawi	22	15	0	0	0	34	71
4	Sultan Abdul Halim,Sungai Petani	127	217	0	0	2	189	535
5	Kulim	29	156	24	4	2	1	216
	<b>PULAU PINANG</b>							
6	Pulau Pinang	674	375	0	0	4	28	1081
7	Seberang Jaya	296	227	441	330	27	0	1321
8	Bukit Mertajam	9	9	21	2	2	22	65
9	Kepala Batas	2	7	12	0	9	0	30
	<b>PERAK</b>							
10	Ipoh	840	468	2098	52	0	68	3526
11	Seri Manjung	118	81	2	0	0	0	201
12	Teluk Intan	230	292	0	0	0	67	589
13	Taiping	110	110	2120	0	0	0	2340
14	Slim River	17	3	0	0	0	0	20
	<b>SELANGOR</b>							
15	Tuanku Ampuan Rahimah, Kelang	700	613	6	0	6	3	1328
16	Ampang	214	326	78	0	195	5	818
17	Serdang	199	247	64	16	65	0	591
18	Selayang	889	680	1929	64	2	5	3569
19	Sungai Buloh	365	130	2219	0	91	0	2805
20	Kajang	73	104	0	0	4	608	789
	<b>WILAYAH PERSEKUTUAN</b>							
21	Kuala Lumpur	1736	835	3006	15	34	90	5716
22	Putrajaya	499	340	0	0	0	20	859
	<b>NEGERI SEMBILAN</b>							
23	Tuanku Jaafar, Seremban	520	535	0	0	11	3	1069
24	Tuanku Ampuan Najihah, Kuala Pilah	75	117	0	0	5	0	197
	<b>MELAKA</b>							
25	Melaka	977	163	1710	262	1537	115	4764
	<b>JOHOR</b>							
26	Sultanah Aminah, JB	874	662	2617	15	775	96	5039
27	Sultan Ismail, JB	1497	871	2776	31	345	706	6226
28	Muar	103	170	175	26	334	12	820
29	Batu Pahat	117	195	805	2	38	1	1158
30	Segamat	10	15	0	0	1	0	26
31	Kluang	3	12	134	0	0	0	149
	<b>PAHANG</b>							
32	Tengku Ampuan Afzan, Kuantan	525	225	1815	2	248	43	2858
33	Temerloh	633	53	1365	0	2	104	2157
	<b>TERENGGANU</b>							
34	Sultanah Nur Zahirah, Kuala Terengganu	782	383	1828	0	110	7	3110
35	Kemaman	42	13	41	349	1	0	446
	<b>KELANTAN</b>							
36	Raja Perempuan Zainab II, Kota Bharu	180	436	2066	969	414	162	4227
37	Kuala Krai	0	27	0	396	53	151	627
38	Tanah Merah	36	42	358	0	96	0	532
	<b>SARAWAK</b>							
39	Umum Sarawak	785	635	26	0	24	32	1502
40	Sibu	210	184	77	0	0	31	502
41	Miri	144	290	979	33	75	4	1525
42	Bintulu	1329	22	0	0	0	35	1386
	<b>SABAH</b>							
43	Queen Elizabeth	377	131	0	0	0	113	621
44	Duchess Of Kent	140	30	0	0	0	19	189
45	Likas	132	423	232	0	0	36	823
46	Tawau	61	105	0	0	0	1562	1728
47	Ranau	0	0	0	0	0	210	210
48	Lahad Datu	2	8	0	0	0	0	10
	<b>TOTAL</b>	17609	11813	29528	2572	4512	4617	70651
		24.9%	16.7%	41.8%	3.6%	6.4%	6.5%	

Table 7 : Epidural analgesia for labour in KKM hospitals, 2010

No.	HOSPITAL	Epidural Analgesia For Labour	
		2009	2010
	<b>KEDAH</b>		
1	Kangar	2	1
	<b>KEDAH</b>		
2	Alor Setar	384	210
3	Langkawi	19	32
4	Sultan Abdul Halim,Sungai Petani	0	2
5	Kulim	5	5
	<b>PULAU PINANG</b>		
6	Pulau Pinang	184	150
7	Seberang Jaya	5	10
	<b>PERAK</b>		
8	Ipoh	493	684
9	Seri Manjung	2	0
10	Teluk Intan	3	3
11	Slim River	0	1
	<b>SELANGOR</b>		
12	Tuanku Ampuan Rahimah, Kelang	284	274
13	Ampang	35	63
14	Serdang	27	28
15	Selayang	210	253
16	Sungai Buloh	104	4
17	Kajang	0	15
	<b>WILAYAH PERSEKUTUAN</b>		
18	Kuala Lumpur	917	913
19	Putrajaya	179	251
	<b>NEGERI SEMBILAN</b>		
20	Tuanku Jaafar, Seremban	67	14
	<b>MELAKA</b>		
21	Melaka	207	327
	<b>JOHOR</b>		
22	Sultanah Aminah, JB	295	278
23	Sultan Ismail, JB	1	14
24	Muar	0	4
25	Batu Pahat	4	2
	<b>PAHANG</b>		
26	Tengku Ampuan Afzan, Kuantan	75	54
27	Temerloh	4	3
	<b>TERENGGANU</b>		
28	Sultanah Nur Zahirah, Kuala Terengganu	101	123
29	Kemaman	2	3
	<b>KELANTAN</b>		
30	Raja Perempuan Zainab II, Kota Bharu	13	9
31	Kuala Krai	2	1
	<b>SARAWAK</b>		
32	Umum Sarawak	8	6
33	Sibu	2	2
34	Miri	1	4
	<b>SABAH</b>		
35	Likas	311	318
	<b>TOTAL</b>	<b>3946</b>	<b>4061</b>



Table 8 : No. of attendances at anaesthetic clinic in KKM hospitals, 2010

No.	HOSPITAL	No. Of Patient Seen In Clinic	
		2009	2010
	<b>PERLIS</b>		
1	Kangar	37	175
	<b>KEDAH</b>		
2	Alor Setar	922	941
3	Langkawi	0	6
4	Sultan Abdul Halim,Sungai Petani	2316	2331
5	Kulim	12	10
	<b>PULAU PINANG</b>		
6	Pulau Pinang	1090	2151
7	Seberang jaya	470	653
	<b>PERAK</b>		
8	Ipoh	2871	2927
9	Seri Manjung	704	636
10	Teluk Intan	547	999
11	Taiping	236	448
12	Slim River	49	94
	<b>SELANGOR</b>		
13	Tuanku Ampuan Rahimah, Kelang	594	663
14	Ampang	315	1731
15	Selayang	2507	2788
16	Kajang	120	219
	<b>WILAYAH PERSEKUTUAN</b>		
17	Kuala Lumpur	4023	4976
	<b>NEGERI SEMBILAN</b>		
18	Tuanku Jaafar, Seremban	3666	3404
19	Tuanku Ampuan Najihah, Kuala Pilah	71	104
	<b>MELAKA</b>		
20	Melaka	5233	5459
	<b>JOHOR</b>		
21	Sultanah Aminah, JB	5717	5858
22	Sultan Ismail, JB	5121	3912
23	Muar	451	472
24	Batu Pahat	2877	2790
25	Segamat	0	5
	<b>PAHANG</b>		
26	Tengku Ampuan Afzan, Kuantan	1899	1979
27	Temerloh	1871	655
	<b>TERENGGANU</b>		
28	Sultanah Nur Zahirah, Kuala Terengganu	2104	2090
	<b>KELANTAN</b>		
29	Raja Perempuan Zainab II, Kota Bharu	1494	1765
30	Kuala Krai	77	155
31	Tanah Merah	0	276
	<b>SARAWAK</b>		
32	Umum Sarawak	190	319
33	Miri	803	693
	<b>SABAH</b>		
34	Queen Elizabeth	0	29
35	Duchess Of Kent	0	119
36	Tawau	134	738
37	Lahad Datu	0	485
	<b>Total</b>	<b>48484</b>	<b>52880</b>

Table 9 : Admissions, patient days and bed-occupancy rates in ICU KKM hospitals, 2010

No.	HOSPITAL	No. Of Admissions	Patients Days	Bed Occupancy Rate
	<b>PERLIS</b>			
1	Kangar	303	1070	70.2%
	<b>KEDAH</b>			
2	Alor Setar	624	2567	83.2%
3	Langkawi	160	692	63.8%
4	Sultan Abdul Halim,Sungai Petani	537	2986	80.9%
5	Kulim	498	2533	99.2%
	<b>PULAU PINANG</b>			
6	Pulau Pinang	1042	5837	61.5%
7	Seberang Jaya	620	2648	90.7%
8	Bukit Mertajam	294	1667	91.4%
9	Kepala Batas	219	1104	75.6%
	<b>PERAK</b>			
10	Ipoh	1187	7478	104.0%
11	Seri Manjung	329	1704	79.0%
12	Teluk Intan	300	1330	91.0%
13	Taiping	873	6469	98.4%
14	Slim River	228	946	51.6%
	<b>SELANGOR</b>			
15	TuanKu Ampuan Rahimah, Kelang	1334	10939	91.9%
16	Ampang	559	3147	89.0%
17	Serdang	740	3383	87.4%
18	Selayang	1111	5707	97.7%
19	Sungai Buloh	1334	7765	118.2%
20	Kajang	397	1655	75.6%
	<b>WILAYAH PERSEKUTUAN</b>			
21	Kuala Lumpur ( GICU )	2054	9654	109.3%
	Kuala Lumpur ( PICU )	569	4552	70.0%
22	Putrajaya	542	1978	89.5%
23	Labuan	97	276	21.0%
	<b>NEGERI SEMBILAN</b>			
24	TuanKu Jaafar, Seremban	562	2320	114.0%
25	TuanKu Ampuan Najihah, Kuala Pilah	238	867	56.2%
	<b>MELAKA</b>			
26	Melaka	1725	7245	110.0%
	<b>JOHOR</b>			
27	Sultanah Aminah, JB	1481	5998	108.7%
28	Sultan Ismail, JB	615	3321	79.2%
29	Muar	560	2113	89.6%
30	Batu Pahat	430	2150	71.4%
31	Segamat	264	1008	83.0%
	<b>PAHANG</b>			
32	Tengku Ampuan Afzan, Kuantan	785	4396	103.0%
33	Temerloh	449	2434	110.5%
	<b>TERENGGANU</b>			
34	Sultanah Nur Zahirah, Kuala Terengganu	1131	8369	93.9%
	<b>KELANTAN</b>			
35	Raja Perempuan Zainab II, Kota Bharu	863	3889	88.5%
36	Kuala Krai	82	1164	72.1%
	<b>SARAWAK</b>			
37	Umum Sarawak	585	2750	104.9%
38	Sibu	630	3745	102.6%
39	Miri	321	1809	79.7%
40	Bintulu	182	1582	86.6%
	<b>SABAH</b>			
41	Queen Elizabeth	904	6165	100.1%
42	Duchess Of Kent	449	2575	116.2%
43	Likas	589	1502	62.0%
44	Keningau	169	887	83.0%
45	Tawau	304	1668	82.5%
46	Lahad datu	846	1005	69.0%
	<b>TOTAL</b>	<b>30115</b>	<b>157051</b>	<b>86.3%</b>

Table 10 : Admissions, patient days and bed-occupancy rates in HDU / PACU in KKM hospitals, 2010

No.	HOSPITAL	No. Of Admissions	Patients Days	Bed Occupancy Rate
	<b>PERLIS</b>			
1	Kangar	142	302	58.2%
	<b>KEDAH</b>			
2	Alor Setar	563	2435	96.6%
3	Sultan Abdul Halim,Sungai Petani	364	1543	84.8%
	<b>PERAK</b>			
4	Ipoh	1712	4318	61.0%
	<b>SELANGOR</b>			
5	Serdang	496	1170	53.4%
	<b>NEGERI SEMBILAN</b>			
6	Tuanku Jaafar, Seremban	399	1241	104.5%
7	Tuanku Ampuan Najihah, Kuala Pilah	829	2377	52.9%
	<b>MELAKA</b>			
8	Melaka	203	1929	40.1%
	<b>JOHOR</b>			
9	Muar	645	1733	60.1%
10	Segamat	677	2099	65.3%
	<b>PAHANG</b>			
11	Tengku Ampuan Afzan, Kuantan	490	2465	110.5%
12	Temerloh	265	1601	106.5%
	<b>TERENGGANU</b>			
13	Kemaman	78	252	34.6%
	<b>KELANTAN</b>			
14	Raja Perempuan Zainab II, Kota Bharu	474	2000	78.3%
	<b>SARAWAK</b>			
15	Umum Sarawak	137	616	37.7%
	<b>TOTAL</b>	<b>7474</b>	<b>26081</b>	<b>69.6%</b>

Table 11 : Attendances, new cases and procedures at Chronic Pain Clinics in KKM hospitals, 2010

No.	HOSPITAL	Total No. Of Patients Seen In Clinic		No. Of New Cases		No. Of Procedures Done	
		2009	2010	2009	2010	2009	2010
	<b>PULAU PINANG</b>						
1	Pulau Pinang	88	335	20	102	0	21
	<b>KEDAH</b>						
2	Alor Setar	0	3	0	3	0	0
	<b>PERAK</b>						
2	Ipoh	1154	1748	129	125	74	94
	<b>SELANGOR</b>						
3	TuanKu Ampuan Rahimah, Kelang	698	966	106	102	42	78
4	Selayang	1522	1342	162	156	67	70
	<b>NEGERI SEMBILAN</b>						
5	TuanKu Jaafar, Seremban	0	54	0	25	0	3
	<b>MELAKA</b>						
6	Melaka	253	528	42	80	18	51
	<b>JOHOR</b>						
7	Sultanah Aminah, JB	0	160	0	54	0	2
8	Sultan Ismail, JB	570	433	108	63	56	36
	<b>PAHANG</b>						
9	Tengku Ampuan Afzan, Kuantan	5	148	1	48	0	67
	<b>TERENGGANU</b>						
10	Sultanah Nur Zahirah, Kuala Terengganu	0	20	0	9	0	10
	<b>KELANTAN</b>						
11	Raja Perempuan Zainab II, Kota Bharu	332	544	67	128	109	158
	<b>TOTAL</b>	<b>4622</b>	<b>6281</b>	<b>635</b>	<b>895</b>	<b>366</b>	<b>590</b>

Table 12: No. of anaesthetics administered in KKM hospitals, 2006 – 2010

No.	HOSPITAL	2006	2007	2008	2009	2010
	<b>PERLIS</b>					
1	Kangar	3337	3712	3862	4346	4259
	<b>KEDAH</b>					
2	Alor Setar	11414	11766	12939	12586	13705
3	Langkawi	806	852	712	739	985
4	Sultan Abdul Halim, Sungai Petani	7051	8547	8268	8236	8350
5	Kulim	3360	3445	3249	3734	3895
	<b>PULAU PINANG</b>					
6	Pulau Pinang	10435	9547	11598	11754	12558
7	Seberang Jaya	5486	5871	6217	6601	6342
8	Bukit Mertajam	599	2064	2061	2497	2343
9	Kepala Batas	393	414	481	562	250
	<b>PERAK</b>					
10	Ipoh	12634	13262	13836	15036	15356
11	Seri Manjung	3008	3233	3458	3702	3692
12	Teluk Intan	4654	4764	4749	4814	5171
13	Taiping	7441	8099	7429	7312	8790
14	Slim River	784	736	721	453	600
	<b>SELANGOR</b>					
15	Tuanku Ampuan Rahimah, Kelang	14144	11712	11023	11545	10842
16	Ampang	106	1547	3940	4694	5799
17	Serdang	2353	4732	6645	7740	7890
18	Selayang	9852	8135	9072	9038	9886
19	Sungai Buloh	224	5420	7106	7104	7240
20	Kajang	4416	4102	3894	3445	3882
	<b>WILAYAH PERSEKUTUAN</b>					
21	Kuala Lumpur	23582	22531	24682	24180	25732
22	Putrajaya	4264	4514	4691	5348	5546
23	Labuan	663	603	522	505	542
	<b>NEGERI SEMBILAN</b>					
24	Tuanku Jaafar, Seremban	8558	8791	8616	8198	9141
25	Tuanku Ampuan Najihah, Kuala Pilah	1816	1901	2019	2127	2253
	<b>MELAKA</b>					
26	Melaka	11184	11466	12471	11639	12427
	<b>JOHOR</b>					
27	Sultanah Aminah, JB	18348	17349	12565	13091	14658
28	Sultan Ismail, JB	1468	4143	6068	6490	6675
29	Muar	4608	4543	4879	4879	4569
30	Batu Pahat	4221	4552	4529	4688	4465
31	Segamat	1546	1409	1396	1374	2029
32	Kluang	1035	877	926	934	974
33	Kulai	132	749	701	731	643
	<b>PAHANG</b>					
34	Tengku Ampuan Afzan, Kuantan	8010	8305	8673	8425	9101
35	Temerloh	4703	5341	5722	6566	6070
	<b>TERENGGANU</b>					
36	Sultanah Nur Zahirah, Kuala Terengganu	10657	10527	10904	11013	10879
37	Kemaman	1531	1185	1550	1652	1197
	<b>KELANTAN</b>					
38	Raja Perempuan Zainab II, Kota Bharu	9339	8327	10181	10521	9854
39	Kuala Krai	812	1190	1035	2025	1746
40	Tanah Merah	85	484	740	865	1296

No.	HOSPITAL	2006	2007	2008	2009	2010
	<b>SARAWAK</b>					
41	Umum Sarawak	12904	10912	11073	10984	11351
42	Sibu	7002	5464	5709	6139	6087
43	Miri	4172	3730	3855	3937	4260
44	Bintulu	1961	1946	2333	2427	2357
45	Sarikei	830	901	953	831	594
46	Kapit	722	556	594	594	428
47	Serian	715	765	685	651	579
48	Bau	201	240	267	212	125
49	Lundu	332	134	297	329	89
50	Simunjan	57	94	116	60	9
51	Sri Aman	426	294	259	183	145
52	Betong	275	195	241	326	308
53	Saratok	129	80	114	65	26
54	Mukah	195	376	192	174	187
55	Daro	61	81	74	76	39
56	Kanowit	145	124	133	93	63
57	Lawas	132	115	160	138	101
58	Limbang	301	417	513	428	531
59	Marudi	172	152	160	160	157
	<b>SABAH</b>					
60	Queen Elizabeth	9624	8775	7393	5609	5701
61	Duchess Of Kent	2832	2768	3846	3827	3989
62	Likas	3746	4950	5152	6633	7764
63	Keningau	2690	2721	2592	2639	2632
64	Tawau	3695	4009	4144	4840	4350
65	Kudat	635	534	481	374	427
66	Kota Marudu	634	579	466	360	324
67	Kota Belud	704	418	441	467	367
68	Mesra, Bukit Padang	351	338	889	976	437
69	Papar	470	299	405	254	143
70	Beaufort	364	363	395	140	395
71	Sipitang	89	80	61	123	64
72	Tenom	616	702	424	437	508
73	Tambunan	288	270	298	328	283
74	Ranau	868	693	1125	1525	1428
75	Beluran	225	199	127	126	214
76	Kinabatangan	57	35	3	21	35
77	Lahad datu	2110	2114	1839	1429	1410
78	Kunak	0	0	0	0	24
79	Semporna	195	121	83	18	65
	<b>TOTAL</b>	<b>279984</b>	<b>287291</b>	<b>302022</b>	<b>309122</b>	<b>319628</b>

Table 13: No. of anaesthetics administered for emergency surgery in KKM hospitals, 2006 - 2010

No	HOSPITAL	2006	2007	2008	2009	2010
	<b>PERLIS</b>					
1	Kangar	58.6%	57.4%	57.2%	45.2%	56.9%
	<b>KEDAH</b>					
2	Alor Setar	49.1%	48.9%	46.9%	50.0%	51.6%
3	Langkawi	65.7%	64.7%	62.9%	59.7%	69.8%
4	Sultan Abdul Halim,Sungai Petani	67.8%	64.6%	69.5%	67.1%	68.9%
5	Kulim	64.4%	58.0%	55.3%	53.1%	55.8%
	<b>PULAU PINANG</b>					
6	Pulau Pinang	40.4%	42.3%	46.2%	46.8%	48.9%
7	Seberang Jaya	72.7%	69.4%	72.4%	72.1%	71.7%
8	Bukit Mertajam	0.0%	0.0%	1.2%	1.0%	2.0%
9	Kepala Batas	0.5%	0.0%	0.0%	1.1%	0.0%
	<b>PERAK</b>					
10	Ipoh	56.0%	58.8%	58.3%	59.2%	59.6%
11	Seri Manjung	62.6%	63.6%	65.5%	62.9%	66.7%
12	Teluk Intan	63.5%	69.9%	61.7%	67.7%	68.2%
13	Taiping	61.7%	64.0%	67.8%	66.5%	64.6%
14	Slim River	59.6%	49.7%	64.4%	59.8%	57.5%
	<b>SELANGOR</b>					
15	Tuanku Ampuan Rahimah, Kelang	64.3%	58.8%	56.6%	53.3%	54.9%
16	Ampang	50.1%	62.4%	63.4%	61.4%	57.5%
17	Serdang	57.3%		54.2%	52.6%	55.7%
18	Selayang	52.8%	43.4%	46.2%	45.3%	49.1%
19	Sungai Buloh	80.4%	68.6%	67.1%	69.0%	75.7%
20	Kajang	72.2%	69.8%	68.6%	73.2%	71.9%
	<b>WILAYAH PERSEKUTUAN</b>					
21	Kuala Lumpur	52.2%	46.4%	43.2%	42.9%	43.5%
22	Putrajaya	53.2%	51.2%	48.8%	49.6%	46.4%
23	Labuan	60.6%	57.9%	60.3%	78.2%	51.1%
	<b>NEGERI SEMBILAN</b>					
24	Tuanku Jaafar, Seremban	54.4%	55.3%	56.2%	56.1%	59.3%
25	Tuanku Ampuan Najihah, Kuala Pilah	58.6%	61.8%	60.0%	52.3%	57.5%
	<b>MELAKA</b>					
26	Melaka	61.8%	60.0%	56.7%	41.9%	59.9%
	<b>JOHOR</b>					
27	Sultanah Aminah, JB	61.1%	60.8%	71.2%	67.0%	66.9%
28	Sultan Ismail, JB	10.7%	53.1%	68.2%	57.0%	67.8%
29	Muar	64.3%	64.8%	62.6%	62.6%	57.3%
30	Batu Pahat	61.1%	64.3%		64.5%	66.8%
31	Segamat	60.2%	60.6%	71.6%	78.5%	65.1%
32	Kluang	64.6%	62.0%	62.5%	56.3%	60.6%
33	Kulai	0.0%	0.0%	0.0%	0.0%	0.0%
	<b>PAHANG</b>					
34	Tengku Ampuan Afzan, Kuantan	46.5%	47.7%	48.8%	50.3%	53.4%
35	Temerloh	63.0%	61.3%	65.4%	65.5%	68.2%
	<b>TERENGGANU</b>					
36	Sultanah Nur Zahirah, Kuala Terengganu	61.9%	62.4%	61.4%	62.8%	64.7%
37	Kemaman	63.8%	67.5%	65.9%	68.3%	71.6%
	<b>KELANTAN</b>					
38	Raja Perempuan Zainab II, Kota Bharu	55.9%	56.6%	53.5%	55.1%	61.5%
39	Kuala Krai	48.0%	59.2%	61.8%	69.7%	68.8%
40	Tanah Merah	65.9%	56.8%	52.4%	63.1%	70.7%

No	HOSPITAL	2006	2007	2008	2009	2010
	<b>SARAWAK</b>					
41	Umum Sarawak	54.0%	51.7%	41.1%	58.4%	59.2%
42	Sibu	30.5%	43.4%	47.3%	52.3%	47.4%
43	Miri	46.9%	54.2%	56.6%	65.3%	70.5%
44	Bintulu	46.7%	55.1%	55.4%	60.6%	60.6%
45	Sarikei	54.3%	56.8%	65.1%	64.6%	66.5%
46	Kapit	49.0%	47.5%	44.8%	43.9%	33.9%
47	Serian	45.3%	44.8%	40.3%	49.8%	48.7%
48	Bau	46.3%	36.3%	50.2%	49.1%	83.2%
49	Lundu	44.0%	44.8%	22.9%	28.3%	65.2%
50	Simunjan	42.1%	55.3%	44.0%	45.0%	22.2%
51	Sri Aman	32.4%	30.6%	42.1%	39.3%	36.6%
52	Betong	23.6%	41.0%	46.9%	31.6%	36.0%
53	Saratok	43.4%	48.8%	36.8%	41.5%	38.5%
54	Mukah	45.6%	43.9%	42.7%	47.7%	43.9%
55	Daro	68.9%	35.8%	45.9%	73.7%	46.2%
56	Kanowit	47.6%	46.0%	55.6%	65.6%	31.7%
57	Lawas	34.8%	50.4%	51.9%	57.2%	45.5%
58	Limbang	52.5%	41.0%	31.0%	28.3%	25.4%
59	Marudi	41.9%	36.8%	49.4%	49.4%	43.3%
	<b>SABAH</b>					
60	Queen Elizabeth	46.0%	49.5%	52.1%	55.4%	55.7%
61	Duchess Of Kent	50.2%	57.9%	63.7%	64.9%	64.5%
62	Likas	71.3%	59.2%	58.2%	59.8%	63.1%
63	Keningau	57.3%	62.9%	55.6%	57.0%	53.8%
64	Tawau	49.6%	54.6%	56.1%	58.6%	65.1%
65	Kudat	32.6%	41.2%	42.8%	41.7%	38.2%
66	Kota Marudu	58.4%	62.5%	63.1%	63.1%	52.2%
67	Kota Belud	39.2%	40.7%	34.5%	27.2%	46.9%
68	Mesra, Bukit Padang	0.0%	0.0%	0.0%	0.0%	0.0%
69	Papar	20.2%	25.4%	30.6%	20.5%	0.0%
70	Beaufort	38.7%	37.2%	36.5%	50.0%	35.4%
71	Sipitang	39.3%	38.8%	37.7%	62.6%	57.8%
72	Tenom	15.1%	12.1%	10.6%	18.1%	10.4%
73	Tambunan	30.9%	97.8%	52.3%	99.7%	80.9%
74	Ranau	25.1%	31.7%	53.4%	59.4%	59.4%
75	Beluran	22.2%	7.0%	29.9%	35.7%	37.9%
76	Kinabatangan	1.8%	2.9%	0.0%	23.8%	65.7%
77	Lahad datu	45.6%	47.9%	52.6%	69.5%	81.0%
78	Kunak	0.0%	0.0%	0.0%	0.0%	0.0%
79	Semporna	39.5%	71.9%	77.1%	44.4%	76.9%
	<b>AVERAGE</b>	<b>48.1%</b>	<b>49.9%</b>	<b>50.4%</b>	<b>55.8%</b>	<b>58.0%</b>



Table 14: Saturdays Lists in KKM Hospitals, 2010

Bi l	Hospital	No. of operations done under Saturday List						No. of Saturday elective list (as of Dec 31st 2010)	
		General Anaesthesia		Local Anaesthesia		Total		2009	2010
		2009	2010	2009	2010	2009	2010		
1	Kangar	98	103	18	34	116	137	74	42
2	Alor Setar	126	224	199	835	325	1059	129	220
3	Sultan Abdul Halim,Sungai Petani	148	150	179	136	327	286	83	87
4	Kulim	66	59	0	0	66	59	29	30
5	Pulau Pinang	452	658	28	66	480	724	109	245
6	Seberang Jaya	153	152	120	194	273	346	49	84
7	Ipoh	352	560	0	0	352	560	133	214
8	Teluk Intan	82	152	0	0	82	152	22	47
9	Taiping	177	192	0	130	177	322	36	77
10	TuanKu Ampuan Rahimah, Kelang	245	221	47	92	292	313	106	94
11	Ampang	125	141	18	22	143	163	47	50
12	Serdang	0	179	0	0	0	179	2	45
13	Selayang	229	350	392	344	621	694	104	181
14	Sungai Buloh	112	99	0	364	112	1056	38	148
15	Kajang	117	105	0	0	117	105	39	40
16	Kuala Lumpur	740	1099	18	97	758	1196	261	417
17	Putrajaya	0	281	0	12	0	293	0	120
18	TuanKu Jaafar, Seremban	68	152	188	240	256	392	23	96
19	Melaka	152	304	21	15	173	314	31	134
20	Sultanah Aminah, JB	258	315	25	21	283	336	76	98
21	Sultan Ismail, JB	160	201	0	0	160	201	40	38
22	Muar	83	121	4	0	87	121	29	42
23	Tengku Ampuan Afzan, Kuantan	92	198	27	26	119	224	38	60
24	Temerloh	124	135	46	14	170	149	35	42
25	Kota Bharu	249	292	209	251	458	543	123	125
26	Kuala Terengganu	253	292	5	12	258	304	84	94
27	Likas	107	183	117	243	224	426	57	123
28	Umum Sarawak	128	154	108	187	236	341	47	99
29	Miri	0	56	0	0	0	56	0	16
30	Queen Elizabeth	298	277	1	0	299	277	104	104
31	Sandakan	0	112	0	23	0	135	0	38
<b>TOTAL</b>		<b>5194</b>	<b>7524</b>	<b>1770</b>	<b>3358</b>	<b>6964</b>	<b>10875</b>	<b>1948</b>	<b>3250</b>

Table 15: Trends in output for Program Anestisiologi, KKM, 2004-2010

	2004	2005	2006	2007	2008	2009	2010
							(% increase from 2009)
No. of anaesthetics administered	229686	266660	277271	286324	301321	308391	319628 3.6%
No. of anaesthetics for day care surgery	NA	NA	4777	5190	5363	5315	5543 0%
No. of patients under acute pain service	18731	22459	31131	40490	52440	61583	65319 6.1%
No. of patients under obstetric analgesia service	NA	3161	3367	3137	3363	3952	4370 10.6%
No. of attendance at anaesthetic clinic	NA	NA	16266	20363	30795	48491	52880 9.1%
No. of ICU admissions	15115	13027	16234	20075	23928	24908	30089 20.9%
No. of HDU admissions	NA	NA	3226	3536	5662	7000	7474 6.8%
No. of attendance at chronic pain clinic	NA	NA	173	1785	3199	4622	6281 35.9%

### Trends in output for Program Anestisiologi, KKM, 2004-2010

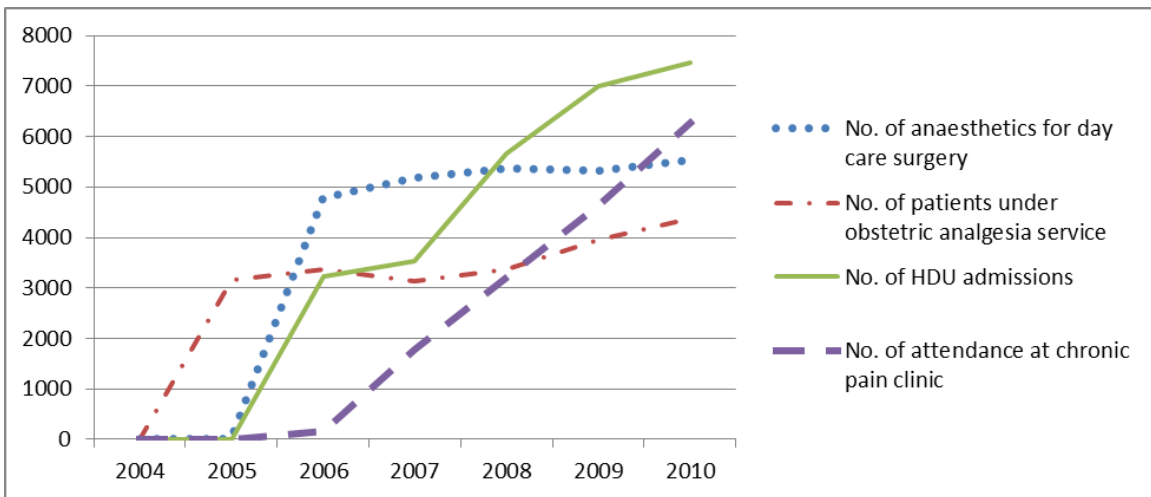
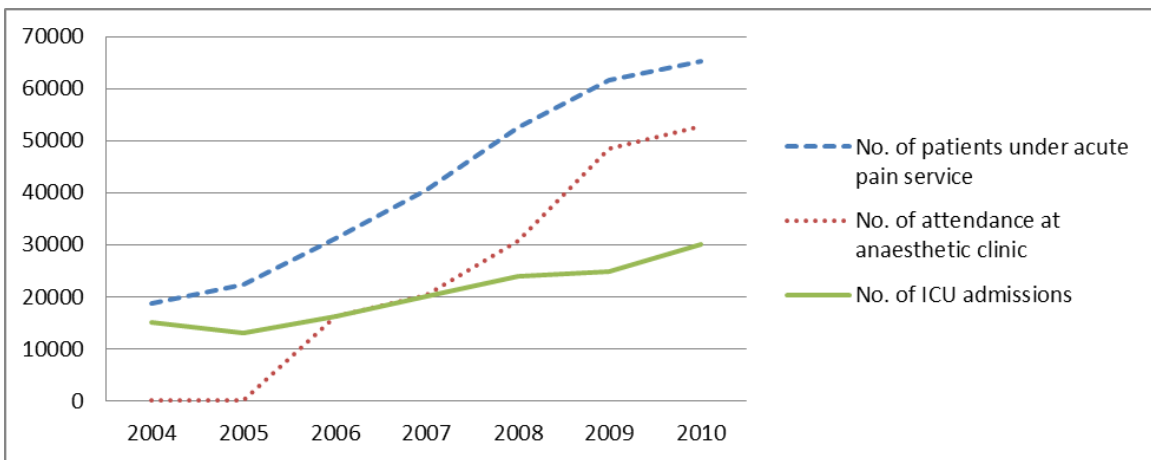
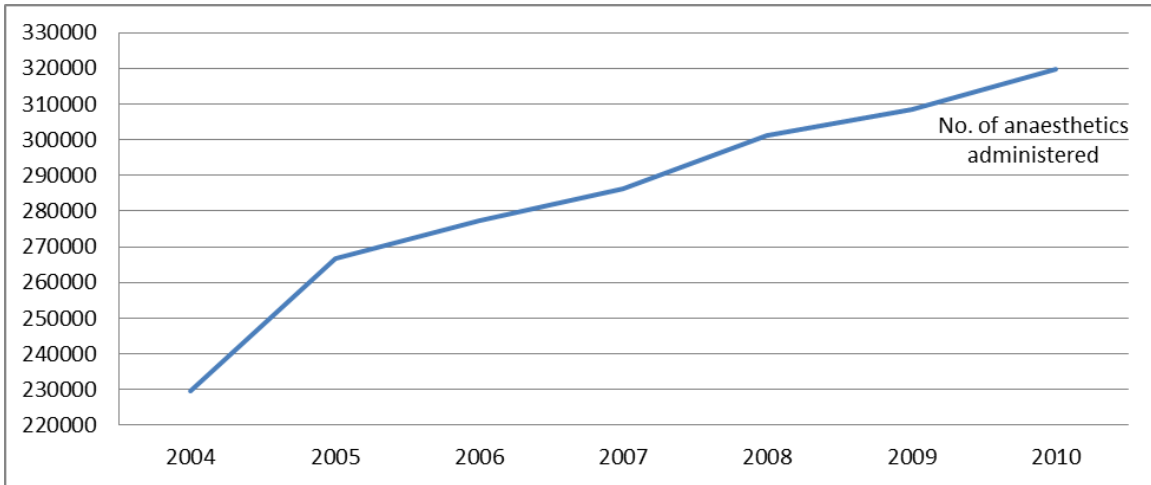


Table 16: Anaesthetic specialists in KKM hospitals, 2010

NO	HOSPITAL	No. Of Specialist											TOTAL	
		Jusa A	Jusa B	Jusa C	U54 / U53	U52 / U51	U48 / U47	U44 / U43	Contract	Sessional	Paid Leave	Non-Paid Leave		
	<b>PERLIS</b>													
1	Kangar			1		2	1							4
	<b>KEDAH</b>													
2	Alor Setar			2	6	1								9
3	Langkawi					1								1
4	Sultan Abdul Halim, Sg Petani			1	3									4
5	Kulim				2									2
	<b>PULAU PINANG</b>													
6	Pulau Pinang	1		4	6	1	3							15
7	Seberang Jaya			1	1	2	1							5
	<b>PERAK</b>													
8	Ipoh		1		10	1	3			1				16
9	Seri Manjung				2									2
10	Teluk Intan				1	1								2
11	Taiping			1	3		2							6
	<b>SELANGOR</b>													
12	T. Ampuan Rahimah, Kelang			2	9									11
13	Ampang		1	1	6									8
14	Serdang		1	2	4	0	1							8
15	Selayang		3		10									13
16	Sungai Buloh		1	1										2
17	Kajang			1	2									3
	<b>WILAYAH PERSEKUTUAN</b>													
18	Kuala Lumpur	1		3	24		4							32
19	Putrajaya		1	2	4									7
20	Labuan			1										1
	<b>NEGERI SEMBILAN</b>													
21	TuanKu Jaafar, Seremban		1	1	6									8
22	T. Ampuan Najihah, Kuala Pilah				1	1								2
	<b>MELAKA</b>													
23	Melaka	1		1	9									11
	<b>JOHOR</b>													
24	Sultanah Aminah, JB		2	2	12									16
25	Sultan Ismail, JB			2	2	1	1							6
26	Muar			2	2	1	1					1		5
27	Batu Pahat			1	1				1					3
28	Segamat						1							1
	<b>PAHANG</b>													
29	Tengku Ampuan Afzan, Kuantan			1	7									8
30	Temerloh			1	2		1		1					5
	<b>TERENGGANU</b>													
31	Sltanh Nur Zahirah, K. Trganu		1		8									9
32	Kemaman					1								1
	<b>KELANTAN</b>													
33	RJ Prmpn Zainab II, K. Bharu		1	3	7									11
34	Kuala Krai				1									1
	<b>SARAWAK</b>													
35	Umum Sarawak		1	1	7	2	3							14
36	Sibu				1		1							2
37	Miri					2						1		3
38	Bintulu						1							1
	<b>SABAH</b>													
39	Queen Elizabeth		1		4		2							7
40	Likas				2	1	2							5
41	Keningau				1									1
42	Lahad datu				1									1
43	Sandakan				2									2
44	Tawau				1									1
	<b>TOTAL</b>	<b>3</b>	<b>15</b>	<b>36</b>	<b>170</b>	<b>18</b>	<b>28</b>	<b>0</b>	<b>2</b>	<b>1</b>	<b>0</b>	<b>2</b>	<b>275</b>	

Table 17: Anaesthetic medical officers and trainees in KKM hospitals, 2010

NO	HOSPITAL	No. Of Service MO							No. Of Trainees					TOTAL	
		U54 / U53	U52 / U51	U48 / U47	U44 / U43	U41	Other / Contract	TOTAL	U54 / U53	U52 / U51	U48 / U47	U44 / U43	U41		Other / Contract
	<b>PERLIS</b>														
1	Kangar	2			5	3	0	10							0
	<b>KEDAH</b>														
2	Alor Setar	2		1	7	6		16			3	2			5
3	Langkawi				1			1							0
4	Sultan Abdul Halim, Sg Petani	1	1		13			15							0
5	Kulim	1	0	1	3			5							0
	<b>PULAU PINANG</b>														
6	Pulau Pinang		1	2	2	7		12			13	6			19
7	Seberang Jaya		1	2	10		3	16							0
8	Bukit Mertajam				3			3							0
9	Kepala Batas			1				1							0
	<b>PERAK</b>														
10	Ipoh			1	12	13		26		1	1	2			4
11	Seri Manjung			1	4	2		7							0
12	Teluk Intan		1		9			10							0
13	Taiping				14			14							0
	<b>SELANGOR</b>														
14	T. Ampuan Rahimah, Kelang	1			12		12	25				2			2
15	Ampang		1		9	2		12							0
16	Serdang				10			10							0
17	Selayang				8			8			3	7			10
18	Sungai Buloh							0							0
19	Kajang	1			9			10							0
	<b>WILAYAH PERSEKUTUAN</b>														
20	Kuala Lumpur	2	1	1	14		1	19			28	29			57
21	Putrajaya			2	13			15				2			2
22	Labuan				1			1							0
	<b>NEGERI SEMBILAN</b>														
23	Tuanku Jaafar, Seremban	1			29			30							0
24	T. Ampuan Najihah, Kuala Pilah		1		6		1	8							0
	<b>MELAKA</b>														
25	Melaka				18		15	33				4			4
	<b>JOHOR</b>														
26	Sultanah Aminah, JB			2	12	2		16							0
27	Sultan Ismail, JB				8	5		13							0
28	Muar				11			11							0
29	Batu Pahat			1	6	2	1	10							0
30	Segamat				1		3	4							0
31	Kluang			1	1			2							0
	<b>PAHANG</b>														
32	Tengku Ampuan Afzan, Kuantan	2		4	8	4		18		1	4	1			6
33	Temerloh			1	3	11	1	16							0
	<b>TERENGGANU</b>														
34	Sltanh Nur Zahirah, K. Trganu	1		2	17	2		22			2				2
35	Kemaman	1		1	1			3							0
	<b>KELANTAN</b>														
36	RJ Prmpn Zainab II, K. Bharu	2		1	9	3		15			7				7
37	Kuala Krai			1	2			3							0
	<b>SARAWAK</b>														
38	Umum Sarawak			2	10			12			2				2
39	Sibu			1	1	4		6							0
40	Miri				3		3	6							0
41	Bintulu				3			3							0
	<b>SABAH</b>														
42	Queen Elizabeth				10			10			5	4			9
43	Likas			3	8			11							0
44	Keningau				2			2							0
45	Lahad datu				1			1							0
46	Sandakan				7			7							0
47	Tawau				4			4							0
	<b>TOTAL</b>	17	7	32	340	66	40	502	0	2	68	59	0	0	129

Table 18: Anaesthetic /ICU nurses and assisted medical officers in KKM hospitals, 2010

NO	HOSPITAL	No. Of Allied Health Personnel																		TOTAL								
		MA						GA Nurse						ICU nurse							APS / OAS / ANES CLINIC							
		U41	U36	U32	U32 (JT)	U29	Contract	U41	U36	U32	U32 (JT)	U29	U19 (JM)	Contract	U41	U36	U32	U32 (JT)	U29		U19 (JM)	Contract	U32	U32 (JT)	U29	U19 (JM)		
<b>PERLIS</b>																												
1	Kangar		1	1	1	3	1			1		20					2		46						1		77	
<b>KEDAH</b>																												
2	Alor Setar			1		3				1		40			1	4	3		70						1		124	
3	Langkawi			1		1						8							12								22	
4	Sg Petani			2		5						32					4		61						2	1	107	
5	Kulim			1		2				1		12					2	6	20								44	
<b>PULAU PINANG</b>																												
6	Pulau Pinang		1	3		10	1			2		35	3		1	3			103						2		164	
7	Seberang Jaya			2		2	1			2		16					2		48						1		74	
8	Bukit Mertajam			1						1		3					2		23								30	
9	Kepala Batas					1				1		4					1		15								22	
<b>PERAK</b>																												
10	Ipoh			2		7						47					3	3	81						3	1	147	
11	Seri Manjung			1		4					1	9					2	2	22						1		42	
12	Teluk Intan			1		1						11					2		17							1	33	
13	Taiping			1		2						13					4	2	78							1	101	
<b>SELANGOR</b>																												
14	Kelang		1	2		4						9			1	5	3		108					1	1	2	1	138
15	Ampang			2		3									1		5		44		1					3	59	
16	Serdang		1	2		9										3			32								47	
17	Selayang			1		4						30			1		2		77							4	119	
18	Sungai Buloh			1		4										3			93									
19	Kajang			1		2						4						3	27								37	
<b>W. PERSEKUTUAN</b>																												
20	Kuala Lumpur		1	6		10	2			2		60				4			152					2	5	7	251	
21	Putrajaya			1		3				1		14					2		50							4	75	
22	Labuan						2																				2	
<b>NEGERI SEMBILAN</b>																												
23	Seremban		1	1		4				1		18					2	1	32							1	61	
24	Kuala Pilah			2		5				1		18		1			1	4	29								61	
<b>MELAKA</b>																												
25	Melaka		1		2		9		1	1	1	2	28	2	1	1	9	4	86					1		5	154	
<b>JOHOR</b>																												
26	Sultanah Aminah, JB			5		8				1		27					7		127								175	
27	Sultan Ismail, JB			2		3						16					4		38		1				2		66	
28	Muar			2								16					2		29								49	
29	Batu Pahat			1		2						8					2	6	22						3		44	
30	Segamat			1	1	4						6					1		30								43	
31	Kluang					4						4															8	
<b>PAHANG</b>																												
32	Kuantan			2		3				1		36	1	1			4	1	51							3	103	
33	Temerloh			1		3				1		23			1	4	2		60							2	97	
<b>TERENGGANU</b>																												
34	Kuala Terengganu			2		8				1		30			1	5	2		78							5	132	
35	Kemaman					1						14														1	16	
<b>KELANTAN</b>																												
36	Kota Bharu			1		11				1	3	2	29	1			7	6	81	1						8	151	
37	Kuala Krai					1						6					1		14								22	

NO	HOSPITAL	No. Of Allied Health Personnel																					TOTAL				
		MA						GA Nurse						ICU nurse						APS / OAS / ANES CLINIC							
		U41	U36	U32	U32 (JT)	U29	Contract	U41	U36	U32	U32 (JT)	U29	U19 (JM)	Contract	U41	U36	U32	U32 (JT)	U29	U19 (JM)	Contract	U32		U32 (JT)	U29	U19 (JM)	
	<b>SARAWAK</b>																										
38	Umum Sarawak		1	6		11	1					2			2		3			54						2	82
39	Sibu			6		3										1	2			47	2						61
40	Miri		1	2		1					3					2	1			33					1	19	63
41	Bintulu			1		3										1	1			17							23
42	Sarikei			2		1																					3
43	Kapit			1		1																					2
44	Serian			1		1																					2
45	Bau			1		1																					2
46	Lundu			1		1																					2
47	Simunjan			1																							1
48	Sri Aman			1		1																					2
49	Betong			1		1																					2
50	Saratok			1		1																					2
51	Mukah			1		1																					2
52	Daro			1																							1
53	Kanowit			2		1																					3
54	Lawas			2																							2
55	Limbang			1		1																					2
56	Marudi			1		1																					2
	<b>SABAH</b>																										
57	Queen Elizabeth		2	4		2					1	9			1	4	1		74						2		100
58	Likas			1		5										1	1		21						1		30
59	Keningau			1		2										1			17								21
60	Lahad datu		1	1		1					2					1			12								18
61	Beaufort			1		1					2																4
62	Beluran					2																					2
63	Kota Belud			1		1																					2
64	Ranau			1		1																					2
65	Sandakan			1		3				1	1					2	1		41			1		1			52
66	Semporna			1		1																					2
67	Tawau			2		4					2																8
68	Sipitang			1																							1
69	Tambunan			1																							1
70	Kinabatangan					1																					1
71	Kota Marudu			1		1																					2
72	Kudat			1		1																					2
73	Kunak					1																					1
74	Pitas			1		1																					2
75	Tenom			1		1																					2
76	Papar			1		1																					2
	<b>TOTAL</b>	1	11	109	2	206	8	1	2	22	6	659	14	2	5	13	109	62	2172	3	1	6	13	64	21	3512	
		337						706						2365						104							

Table 19: Subspecialists under Program Anestisiologi in KKM hospitals, 2010 (as of 31.12.10)

No.	Hospital	Cardiac Anaesthesia		Pediatric Anaesthesia		Neuro Anaesthesia		Obstetric Anaesthesia		Anaesthesia for Transplant Surgery		Intensive Care (Adult)		Pain Management	
		Subspecialist	Trainee	Subspecialist	Trainee	Subspecialist	Trainee	Subspecialist	Trainee	Subspecialist	Trainee	Subspecialist	Trainee	Subspecialist	Trainee
1	Alor Setar											1	1		1
2	P. Pinang	3	2			1						1	1		1
3	Ipoh			1										1	1
4	Taiping												1		
5	Selayang			1				1		1		1		1	3
6	Sungai Buloh					1	0					1	1		1
7	Serdang	4	2												
8	Kelang							1					1		
9	Kuala Lumpur			4	3	1	2	1	1			2	3		2
10	Seremban			1								1			
11	Melaka											1			1
12	Kota Bharu			1	1							1		1	1
13	Kuantan					1									
14	Kuala Trengganu											2			1
15	Sultanah Aminah, JB	4	1	1	1							1	1		
16	Sultan Ismail, JB													1	
17	Kuching	2	1		1										
18	Kota Kinabalu	1										1			
19	Likas			1											
20	Oversea				1						1		2		1
	Total	14	6	10	7	4	2	3	1	1	1	13	11	4	13

Total no. of subspecialists = 49

Total no. of subspecialty trainees = 41



Table 20: No. of ICU / HDU beds and OT in KKM hospitals 2010

NO	HOSPITAL	Facility					
		ICU Bed		HDU Bed		OR	
		Available	Functional	Available	Functional	Available	Functional
	<b>PERLIS</b>						
1	Kangar	5	5	4	4	4	4
	<b>KEDAH</b>						
2	Alor Setar	10	9	14	7	10	10
3	Langkawi	4	5	0	0	2	2
4	Sultan Abdul Halim, Sungai Petani	10	7	10	5	9	6
5	Kulim	8	7	0	0	3	3
	<b>PULAU PINANG</b>						
6	Pulau Pinang	26	22	0	0	16	14
7	Seberang Jaya	8	8	4	4	3	3
8	Bukit Mertajam	7	7	0	0	3	3
9	Kepala Batas	4	4	0	0	4	2
	<b>PERAK</b>						
10	Ipoh	22	22	20	20	17	15
11	Seri Manjung	8	8	0	0	3	3
12	Teluk Intan	4	4	0	0	6	4
13	Taiping	18	18	0	0	4	4
14	Slim River	5	5	0	0	4	2
	<b>SELANGOR</b>						
15	Tuanku Ampuan Rahimah, Kelang	22	22	6	0	15	15
16	Ampang	12	12	12	0	13	5
17	Serdang	16	8	8	6	20	9
18	Selayang	26	20	0	0	22	16
19	Sungai Buloh	18	18	24	12	22	7
20	Kajang	6	6	0	0	3	3
	<b>WILAYAH PERSEKUTUAN</b>						
21	Kuala Lumpur	30	30	0	0	33	33
22	Putrajaya	11	11	0	0	9	7
23	Labuan	5	4	0	0	2	2
	<b>NEGERI SEMBILAN</b>						
24	Tuanku Jaafar, Seremban	8	8	5	5	10	8
25	Tuanku Ampuan Najihah, Kuala Pilah	4	4	12	12	3	2
	<b>MELAKA</b>						
26	Melaka	22	22	2	2	11	10
	<b>JOHOR</b>						
27	Sultanah Aminah, JB	32	32	0	0	10	10
28	Sultan Ismail, JB	12	12	20	10	18	10
29	Muar	8	8	14	4	4	4
30	Batu Pahat	8	8	0	0	2	2
31	Segamat	4	4	4	4	3	3
32	Kluang	0	0	6	6	2	2
	<b>PAHANG</b>						
33	Tengku Ampuan Afzan, Kuantan	12	12	6	6	13	10
34	Temerloh	10	6	8	4	13	10
	<b>TERENGGANU</b>						
35	Sultanah Nur Zahirah, Kuala Terengganu	20	17	0	0	16	13
36	Kemaman	0	0	2	2	2	2
	<b>KELANTAN</b>						
37	Raja Perempuan Zainab II, Kota Bharu	23	15	5	5	7	7
38	Kuala Krai	3	2	0	0	1	1

NO	HOSPITAL	Facility					
		ICU Bed		HDU Bed		OR	
		Available	Functional	Available	Functional	Available	Functional
	<b>SARAWAK</b>						
39	Umum Sarawak	9	9	2	2	13	12
40	Sibu	10	10	0	0	12	8
41	Miri	6	6	2	0	2	2
42	Bintulu	6	6	0	0	4	3
43	Sarikei	0	0	0	0	2	2
44	Kapit	0	0	2	2	2	2
45	Serian	0	0	0	0	2	2
46	Bau	0	0	0	0	2	2
47	Lundu	0	0	0	0	2	2
48	Simunjan	0	0	0	0	2	2
49	Sri Aman	0	0	0	0	2	2
50	Betong	0	0	0	0	2	2
51	Saratok	0	0	0	0	2	2
52	Mukah	0	0	0	0	2	2
53	Daro	0	0	0	0	2	2
54	Kanowit	0	0	0	0	2	2
55	Lawas	0	0	0	0	2	2
56	Limbang	0	0	0	0	2	2
57	Marudi	0	0	0	0	2	2
	<b>SABAH</b>						
58	Queen Elizabeth	17	17	8	8	3	5
59	Likas	6	6	12	0	6	6
60	Keningau	4	4	0	0	3	3
61	Lahad datu	4	4	0	0	3	3
62	Beaufort	0	0	0	0	2	2
63	Beluran	0	0	0	0	2	2
64	Kota Belud	0	0	0	0	1	1
65	Ranau	0	0	0	0	2	2
66	Sandakan	8	8	0	0	4	4
67	Semporna	0	0	0	0	1	1
68	Tawau	5	4	0	0	7	5
69	Sipitang	0	0	0	0	1	1
70	Tambunan	0	0	0	0	1	1
71	Kinabatangan	0	0	0	0	1	0
72	Kota Marudu	0	0	0	0	2	2
73	Kudat	0	0	0	0	2	2
74	Kunak	0	0	0	0	1	1
75	Pitas	0	0	0	0	1	1
76	Tenom	0	0	0	0	1	1
77	Papar	0	0	0	0	2	0
	<b>TOTAL</b>	<b>526</b>	<b>486</b>	<b>212</b>	<b>130</b>	<b>449</b>	<b>364</b>

\* census taken on 31<sup>st</sup> December 2010

Table 21: Program Anestisiologi key performance indicators, 2010

No.	HOSPITAL	Patients awaiting Emergency Surgery for more than 24 hours ( all OT ) (%)	Elective and Emergency Surgery Patients who receive Acute Pain Service (%)	Patients Undergoing Elective Surgery who are assessed in the Anaesthetic Clinic (%)	Incidence of intubation's in the Recovery room (&)	Ventilator Care Bundle ( VCB ) Compliance (&)	Department Mortality and Morbidity Meetings (%)	Total Number of Patient Visit ( By the Acute Pain Service ) per Acute Pain Nurse
1	Kangar	0.0	4.6	10.9	0.02	96.5	116	112
2	Alor Setar	0.0	14.5	14.2	0.02	93.0	133	296
3	Langkawi	0.0	5.2	NA	0	0.0	0	100
4	Pulau Pinang	0.9	10.9	49.5	0	96.7	133	559
5	Seberang Jaya	0.5	20.8	32.0	0	97.0	125	414
6	Bukit Mertajam	NA	11.5	NA	0	NA	NA	NA
7	Kepala Batas	NA	NA	NA	0	100.0	NA	NA
8	Ipoh	0.0	22.6	47.2	0.08	99.0	100	376
9	Teluk Intan	0.0	12.5	61.4	0	96.0	100	323
10	Taiping	0.0	29.8	14.4	0	98.2	100	395
11	Slim River	0.0	0.2	36.8	0	57.0	100	NA
12	Seri Manjung	0.0	5.4	51.2	0	100.0	100	99
13	Tuanku Ampuan Rahimah, Kelang	0.7	22.1	11.0	0	89.1	100	396
14	Ampang	0.1	14.1	70.3	0	91.0	92	192
15	Serdang	5.2	7.5	0.0	0.05	88.2	NA	259
16	Selayang	1.1	15.1	56.6	NA	88.6	100	387
17	Sungai Buloh	0.7	33.9	NA	0.01	85.1	100	100
18	Kuala Lumpur	0.2	25.0	34.2	0.02	91.0	225	407
19	PutraJaya	0	16.7	NA	0.02	100	0	217
20	Labuan	0.0	NA	NA	0	100.0	100	NA
21	Tuanku Jaafar, Seremban	0.4	12.9	48.0	0.01	100.0	100	452
22	Melaka	0.3	38.5	85.2	0.06	98.2	150	394
23	Sultanah Aminah, JB	1.8	34.6	121.0	0.1	100.0	100	426
24	Muar	0.0	17.6	23.1	0	95.1	83	158
25	Kluang	0.0	30.0	NA	NA	NA	NA	NA
26	Tengku Ampuan Rahimah, Kuantan	0.6	31.2	46.2	0	96.6	100	386
27	Temerloh	0.5	35.5	33.9	0	88.6	100	527
28	Sultanah Nur Zahirah, Kuala Terengganu	0.0	28.6	54.7	0	98.0	133	308
29	Raja Perempuan Zainab II, Kota Bharu	0.4	70.8	46.5	0.02	96.4	183	329
30	Sibu	0.0	8.2	NA	0	90.6	13	NA
31	Umum Sarawak	1.3	13.0	4.7	0.06	84.8	8	246
32	Bintulu	0.0	58.8	NA	0	100.0	12	NA
33	Miri	0.1	35.8	55.1	0.05	98.5	100	310
34	Queen Elizabeth	0.4	10.0	1.2	0.07	94.0	100	317
	National Standard	< 1%	> 10%	> 30%	< 0.3%	> 80%	6 times in 6 months	> 300 visits